

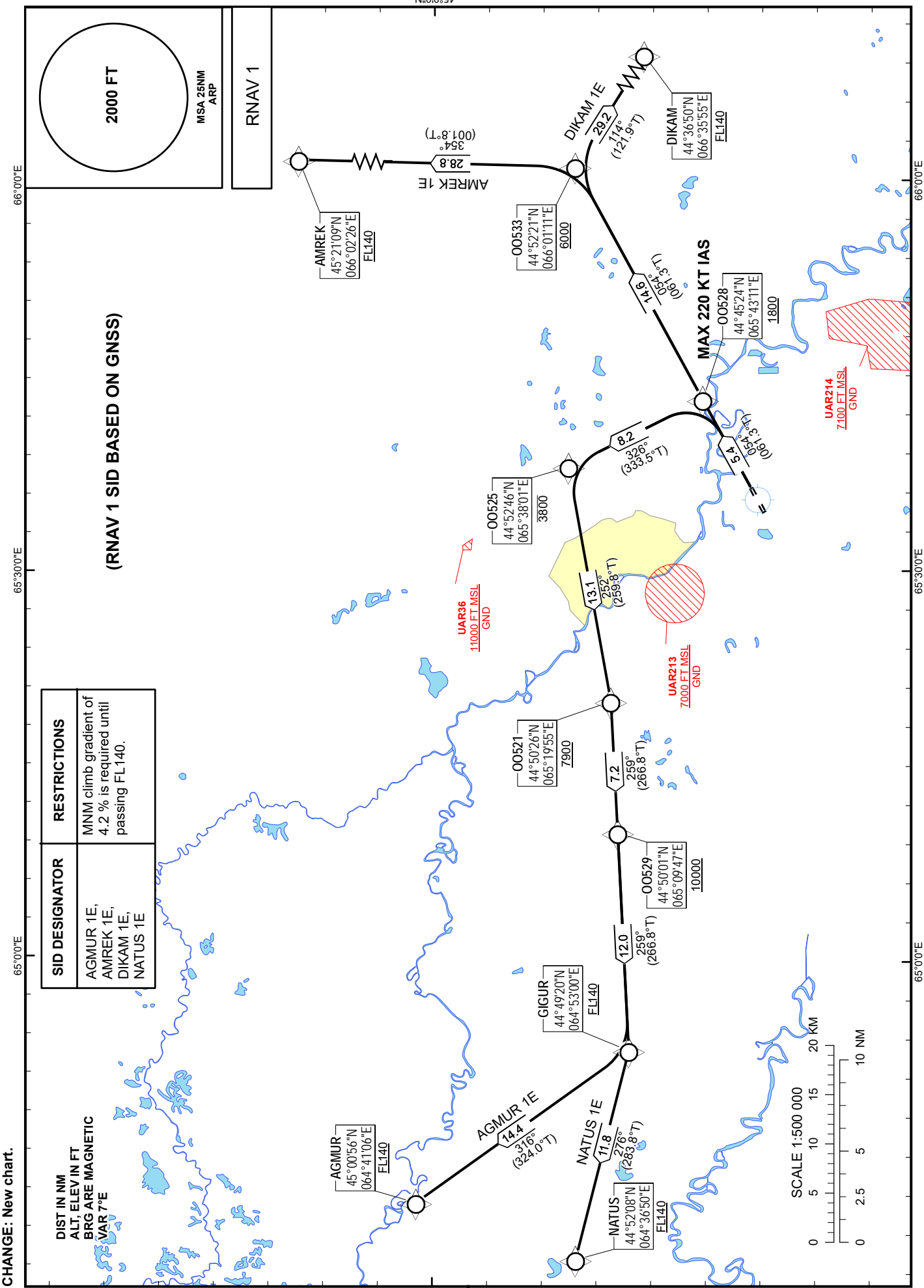
STANDARD DEPARTURE  
CHART- INSTRUMENT  
(SID) - ICAO

TRANSITION ALTITUDE  
10000 FT

KYZYLORDA TOWER 120.9  
KYZYLORDA ATIS (EN) 134.9  
KYZYLORDA ATIS (RU) 122.9

AGMUR 1E, AMREK 1E,  
DIKAM 1E, NATUS 1E

KYZYLORDA  
RWY 05



**TABULAR DESCRIPTION**

AGMUR 1E RWY05											
Serial Number	Path Descriptor	Waypoint Identifier	Fly - over	Course M°(T°)	Magnetic Variation(°)	Distance (NM)	Turn Direction	Altitude (FT)	Speed (KT)	VPA (°)	Navigation Specification
010	CF	OO528	-	054(061.3)	+7.5	5.4	-	+1800	-220	2.6	RNAV 1
020	TF	OO525	-	326(333.5)	+7.5	8.2	L	-3800	-	2.5	RNAV 1
030	TF	OO521	-	252(259.8)	+7.5	13.1	L	+7900	-	3	RNAV 1
040	TF	OO529	-	259(266.8)	+7.5	7.2	R	+10000	-	3	RNAV 1
050	TF	GIGUR	-	259(266.8)	+7.5	12.0	-	+FL140	-	3	RNAV 1
060	TF	AGMUR	-	316(324.0)	+7.5	14.4	R	+FL140	-	1.9	RNAV 1

AMREK 1E RWY05											
Serial Number	Path Descriptor	Waypoint Identifier	Fly - over	Course M°(T°)	Magnetic Variation(°)	Distance (NM)	Turn Direction	Altitude (FT)	Speed (KT)	VPA (°)	Navigation Specification
010	CF	OO528	-	054(061.3)	+7.5	5.4	-	+1800	-	2.6	RNAV 1
020	CF	OO533	-	054(061.3)	+7.5	14.6	-	+6000	-	2.6	RNAV 1
030	TF	AMREK	-	354(001.8)	+7.5	28.8	L	+FL140	-	2.6	RNAV 1

DIKAM 1E RWY05											
Serial Number	Path Descriptor	Waypoint Identifier	Fly - over	Course M°(T°)	Magnetic Variation(°)	Distance (NM)	Turn Direction	Altitude (FT)	Speed (KT)	VPA (°)	Navigation Specification
010	CF	OO528	-	054(061.3)	+7.5	5.4	-	+1800	-	2.6	RNAV 1
020	CF	OO533	-	054(061.3)	+7.5	14.6	-	+6000	-	2.6	RNAV 1
030	TF	DIKAM	-	114(121.9)	+7.5	29.2	R	+FL140	-	2.6	RNAV 1

NATUS 1E RWY05											
Serial Number	Path Descriptor	Waypoint Identifier	Fly - over	Course M°(T°)	Magnetic Variation(°)	Distance (NM)	Turn Direction	Altitude (FT)	Speed (KT)	VPA (°)	Navigation Specification
010	CF	OO528	-	054(061.3)	+7.5	5.4	-	+1800	-220	2.6	RNAV 1
020	TF	OO525	-	326(333.5)	+7.5	8.2	L	-3800	-	2.5	RNAV 1
030	TF	OO521	-	252(259.8)	+7.5	13.1	L	+7900	-	3	RNAV 1
040	TF	OO529	-	259(266.8)	+7.5	7.2	R	+10000	-	3	RNAV 1
050	TF	GIGUR	-	259(266.8)	+7.5	12.0	-	+FL140	-	3	RNAV 1
060	TF	NATUS	-	276(283.8)	+7.5	11.8	R	+FL140	-	1.9	RNAV 1

**WAYPOINT COORDINATES**

Waypoint Identifier	Coordinates	
AGMUR	450056.00N	0644106.00E
AMREK	452109.00N	0660226.00E
DER	444247.74N	0653630.37E
DIKAM	443650.00N	0663555.00E
GIGUR	444920.00N	0645300.00E
NATUS	445208.00N	0643650.00E
OO521	445025.72N	0651955.39E
OO525	445245.55N	0653801.33E
OO528	444524.00N	0654310.79E
OO529	445001.30N	0650947.32E
OO533	445220.75N	0660110.53E